

# Installation guide

## Module tower T1, T2, T3 -

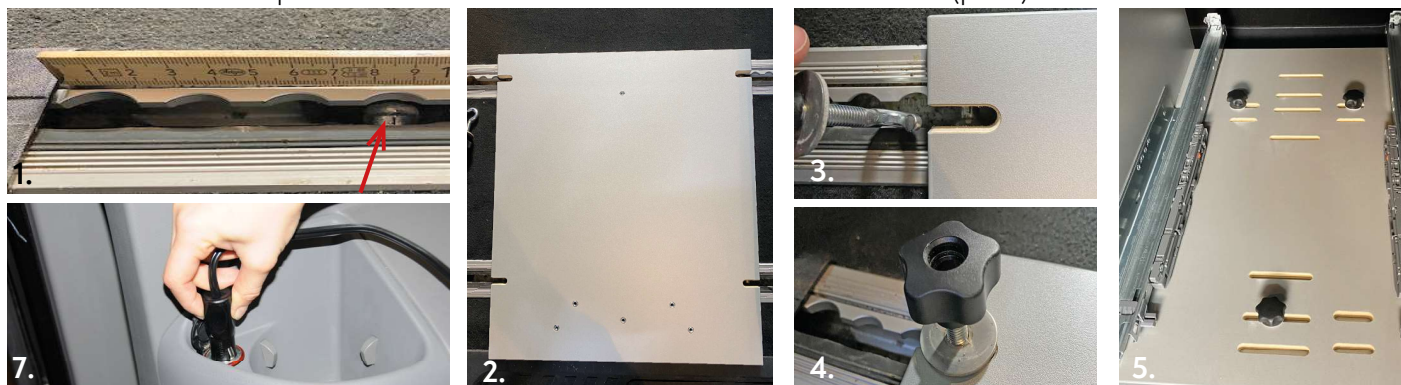
## Mercedes with roller carriage and with 3-seater sleeping bench

ALWAYS close the drawers and lock it before driving! Otherwise the drawers could damage the tower.

VanEssa  
mobilcamping

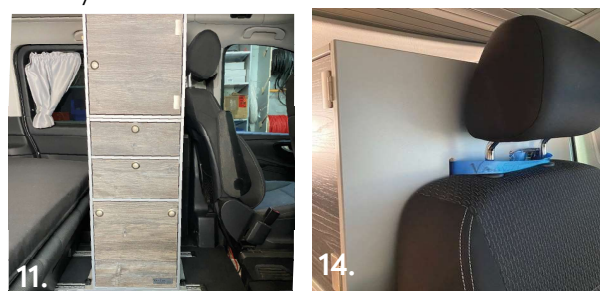
### 1. Installation & fastening

- Position the roller carriages so that the foremost strut for hooking is below the 4th grid in the rail (pic. 1).
- Place the adapter plate on the rails so that the cutouts for fastening are above the struts (pic. 2).
- Hang the bolts on the strut under the adapter plate and screw it tight (pic. 3+4).
- Remove the drawers of the module tower to reduce weight.  
*Note:* To remove the drawers just press the orange clips and pull out the drawers (pic. 9).
- Place the module tower behind the driver's seat (in driving position) with the slots precisely above the screw-in nuts and fix the tower with the three star knob screws (pic. 5).
- Now you can place the drawers on the rails and push them into the tower. It will automatically click in position.
- Module with coolbox pullout: Put the cable from the tower into a 12 Volt socket (pic. 7).



### 2. Pull-out table

- Open the second drawer and pull the above table out by grabbing the little notch at the bottom (pic. 8).
- Once in a while the table can clamp. If so, push the plate to unlock and then pull again.
- While extended, the table rests on the second drawer. The drawer needs to be pulled out at least half length (pic. 9+10).
- Always insert the drawer first and the table afterwards.



### 3. Additional top cabinet

Place the top cabinet on the tower and use the two knurled screws to fix it (pic. 11-13).

In addition, fasten the attachment with a lashing strap to the headrest of the driver's seat (pic. 14+15).



### 4. Module tower T2

When using the toilet, place the delivered board in front of the lower drawer to give supplementary stability to the drawer (pic. 16+17).

*Tip:* We recommend to place a little rug above the board.



### 5. Module tower with coolbox pullout

- Place the coolbox on the pullout of the bottom drawer (tilt the box a little to the back).
- Before closing the drawer, plug in the 12V-cable to the coolbox.
- Draw the included spring with the screw in one of the threads at the back of the coolbox, then hang the spring into the cable. This avoids the cable to be clamped (pic. 18).
- We recommend not to prolong the included 12V-cable.

If you have any further questions please do not hesitate to contact us: +49 (0) 8063 / 20 760